

ORDERING A SIMONDS INSERTED TOOTH SAW

Please provide the following information when ordering your new saw blade.

of saws: _____ Diameter (in): _____ Tooth Style: _____
 # of Teeth: _____ Tooth Type: _____
 *Hand: _____ Tooth Finish: _____
 Shank Style: _____
 Plate Gauge at Rim: _____ Plate Gauge at Eye: _____ Eye (center hole) Diameter: _____
 RPM out of cut: _____ * Bolt Circle 1: _____ Pinhole 1 Dia: _____ Hole 1 QTY: _____
 Bolt Circle 2: _____ Pinhole 2 Dia: _____ Hole 2 QTY: _____

Tooth Style: F, B, 2-1/2, 3

Tooth Type: Regular, Long, Standall, Dominator

Tooth Finish: Blue Tip Carbon Steel, Si-Chrome hard chrome coated, Dominator Carbide tip

Shank Style: Regular (for use with all Tooth Types), Super or Wintar (for use with Regular and Long only)

*Hand of saw: Stand on the infeed side of the blade, with the teeth facing you.

If the log passes on the left side of the saw, the board drops to the right, this is a Left Hand mill.

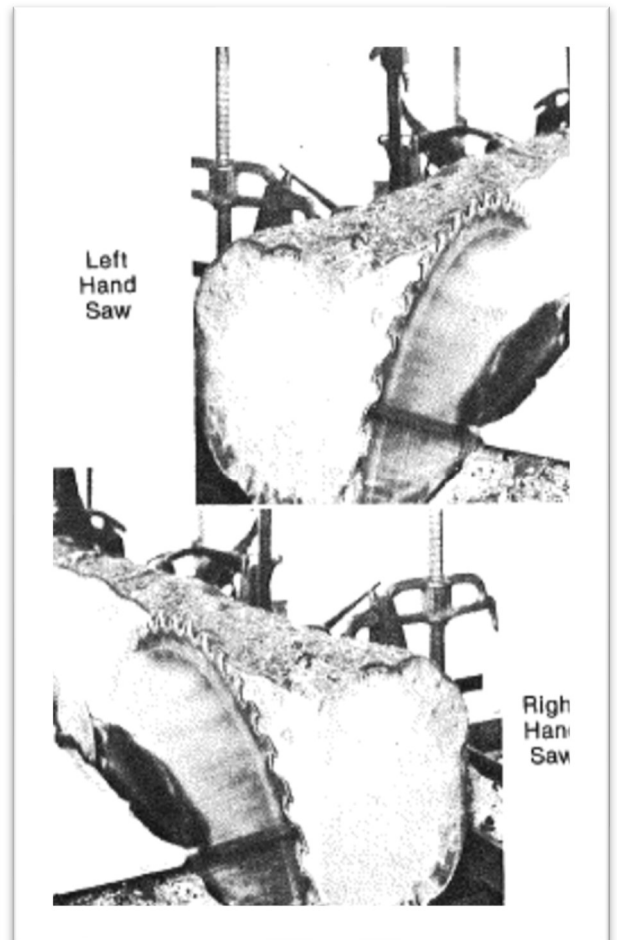
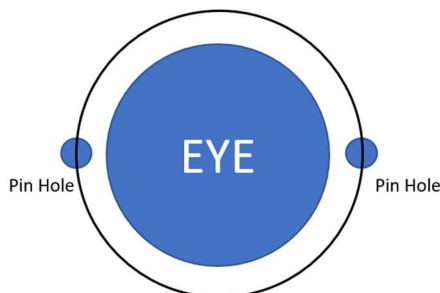
If the log passes on the right side of the saw, the board drops to the left, this is a Right Hand mill.

* Bolt Circle: Pin holes are usually used in pairs. Bolt Circle is the distance from center of one pin hole to center of second hole.

SAW PLATE			
GAUGES	=	DECIMAL	MM
5 GA	=	0.220	5.588
6 GA	=	0.203	5.156
7 GA	=	0.180	4.572
8 GA	=	0.165	4.191
9 GA	=	0.148	3.759
10 GA	=	0.134	3.404
11 GA	=	0.120	3.048

Saws 42" Diameter and larger are usually at least one gauge thicker at the eye than the rim. This makes the saw more stable in the cut, improving sawing performance.

- Bolt Circle of Pin Holes



ALWAYS USE SIMONDS BITS AND SHANKS FOR A GUARANTEED PERFECT FIT

Maximum number of Teeth possible in an Inserted Tooth Saw blade

Diameter	F Style	B Style	2-1/2 Style	#3 Style	Diameter	F Style	B Style	2-1/2 Style	#3 Style
10"	8	8	10	-	38"	36	32	42	32
12"	10	8	12	-	40"	38	34	44	34
14"	12	10	14	-	42"	40	36	46	36
18"	16	14	20	-	44"	42	38	50	38
20"	18	16	22	16	46"	44	40	52	40
22"	20	18	24	18	48"	46	40	54	42
24"	22	20	26	20	50"	48	42	56	44
26"	24	22	28	20	52"	50	44	60	46
28"	26	24	30	22	54"	52	46	62	48
30"	28	26	30	24	56"	54	48	64	50
32"	30	28	34	26	58"	56	50	66	50
34"	32	30	36	28	60"	58	52	68	52
36"	34	32	38	30					



SHANK GAUGES			
GAUGES	=	DECIMAL	MM
5 GA	=	0.240	6.096
6 GA	=	0.240	6.096
7 GA	=	0.220	5.588
8 GA	=	0.200	5.080
9 GA	=	0.180	4.572
10 GA	=	0.160	4.064
11 GA	=	0.140	3.556

SAW BIT KERF SIZES			
FRACTION	=	DECIMAL	MM
7/32	=	0.219	5.562
1/4	=	0.250	6.350
17/64	=	0.265	6.746
9/32	=	0.281	7.137
5/16	=	0.312	7.937
11/32	=	0.343	8.731
3/8	=	0.375	9.525

